



Wise Lane

£2,500,000

An extremely impressive, five bedroom double fronted house built approximately 3 years ago to a high standard 4855 sq ft, situated in a premier location, with a fabulous 150 ft landscaped garden overlooking Arrandene open spaces, and a large frontage with carriage driveway and electric gates. The property is arranged on four floors providing luxurious family accommodation, including a home cinema room, gym with shower, steam and sauna rooms, under floor heating, air conditioning, swimming pool, video entry phone and built in vacuum system. Sole Agents.

Viewing

Please contact our Mill Hill Office on 020 8959 0011 if you wish to arrange a viewing appointment for this property or require further information.



5



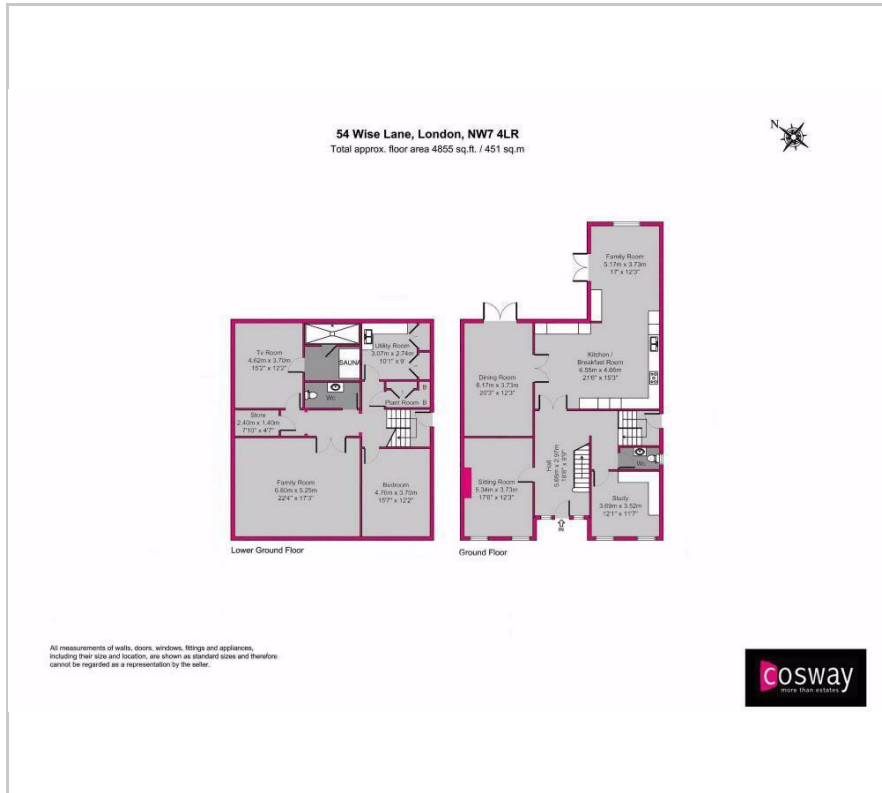
4



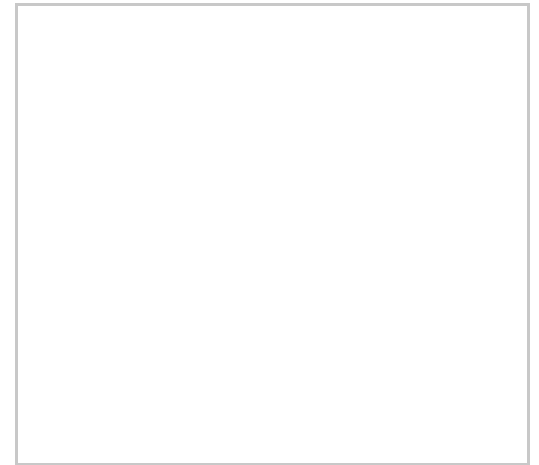
5



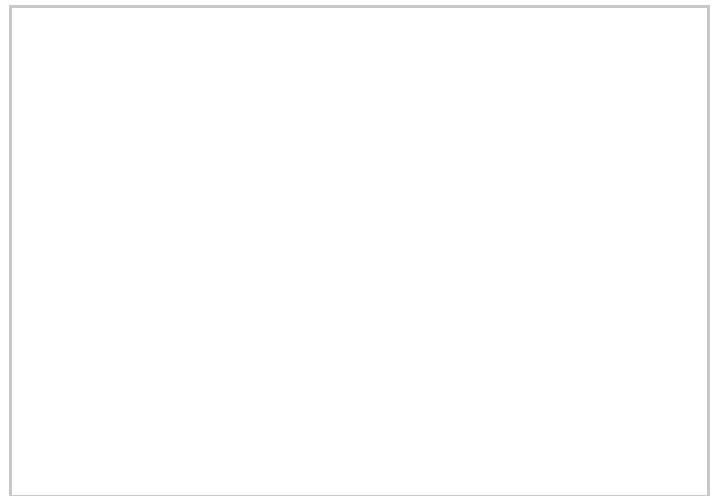
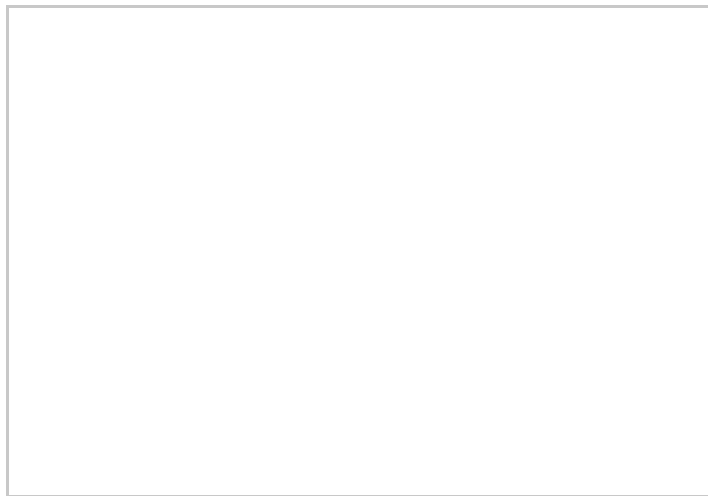
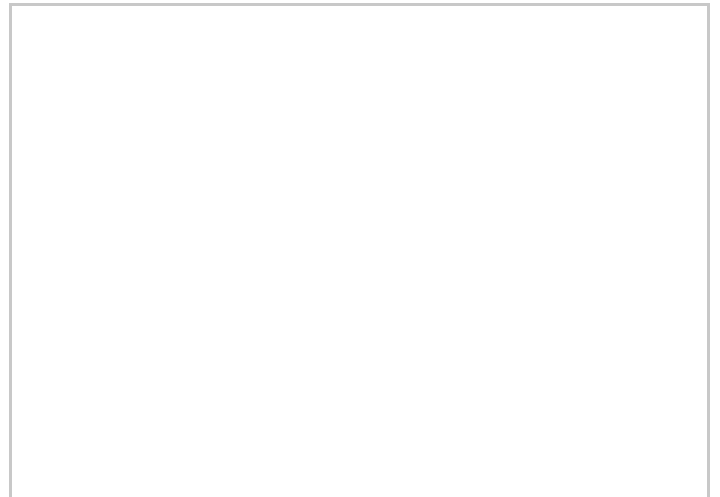
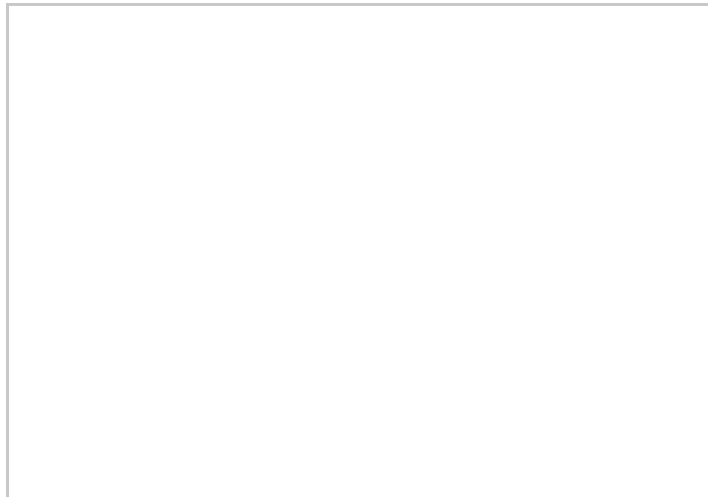
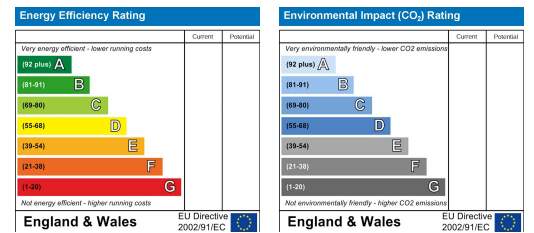
Floor Plan



Area Map



Energy Efficiency Graph



These particulars, whilst believed to be accurate are set out as a general outline only for guidance and do not constitute any part of an offer or contract. Intending purchasers should not rely on them as statements of representation of fact, but must satisfy themselves by inspection or otherwise as to their accuracy. No person in this firm's employment has the authority to make or give any representation or warranty in respect of the property.